

*A*s we welcome you to the 102nd U.S. Women's Amateur Championship, the rich golfing heritage embodied in this prestigious event comes vividly to mind.

It was first played in 1895, marking the inaugural of women's competitive golf in America. Along with the U.S. Amateur and the U.S. Open, it is among the USGA's three most venerable tournaments.

The Women's Amateur has always been a "proving ground of greatness" serving to identify the finest U.S. amateur players—scores of whom have gone on to legendary professional careers.

We are also particularly proud that our tournament has gained worldwide recognition, attracting a growing number of competitors from foreign lands. May they find success in their quest for new horizons.

The Women's Amateur Championship will be played for the first time at majestic Sleepy Hollow Country Club. To all contestants—to the officials, spectators, sponsors and the media—I extend my greetings and best wishes on behalf of the USGA Women's Committee.

—Cora Jane Blanchard

## *Previous Years' Winners*



1998: Grace Park  
Barton Hills C.C.  
Ann Arbor, Mich.



1999: Dorothy Delasin  
Biltmore Forest C.C.  
Asheville, NC



2000: Marcy Newton  
Waverly C. C.  
Portland, Oregon

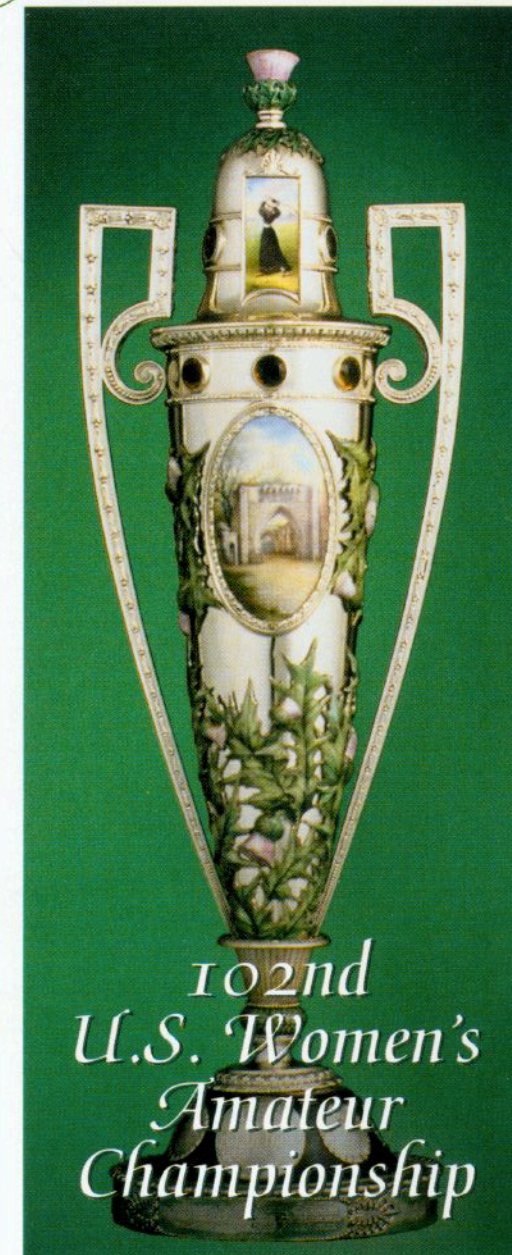
For information on Support and  
Patronage of U.S. Women's Amateur  
Golf Programs:

Sleepy Hollow Country Club

P.O. Box 345

Scarborough-on-Hudson, NY 10510

Business Office, 914-941-8070 ext. 315



AUGUST 10–17, 2002

SLEEPY HOLLOW COUNTRY CLUB  
Scarborough-On-Hudson  
New York

“Our dedication  
to tradition and  
excellence has  
spanned the  
generations.”



Cora Jane Blanchard  
Chairman, USGA  
Women's Committee





**S**leepy Hollow Country Club was founded in 1911 by a group that included such eminent figures as William and Percy Rockefeller, Cornelius Vanderbilt and John Jacob Astor. The standards they set in creating an “atmosphere of excellence” for golfing have endured into the new millennium.

A premier venue of the many metropolitan area golf championships, the 325 acre Sleepy Hollow landscape resonates with history. Its two courses are architectural masterpieces; so, too, is its monumental clubhouse overlooking the Hudson River.

In all, this is a rare setting for the unique and demanding challenges of Sleepy Hollow Country Club’s 6,547-yard Upper Course, on which the 2002 U.S. Women’s Amateur Championship will be played.

*Designed in the late 1800s by architect Stanford White, this palatial 75-room Victorian mansion was the home of a wealthy family whose estate was incorporated into the country club.*

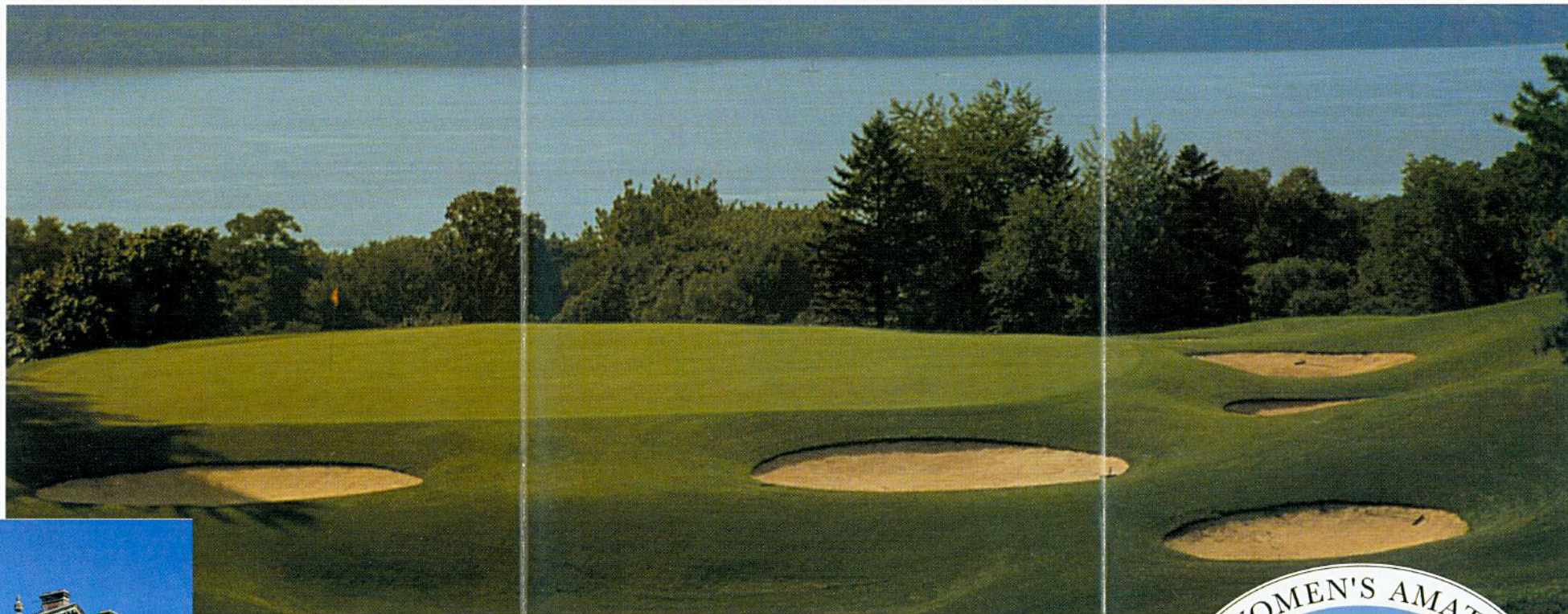
*Serving as a clubhouse of grandeur and distinction, the mansion was modernized and expanded to suit the times. It is admired for its ballroom, library, gracious dining facilities and vast riverview terrace.*



Washington Irving’s famous story, “The Legend of Sleepy Hollow” is the origin of the club’s Headless Horseman symbol. It is said that the ghostly figure can be seen at the “Haunted Bridge” near the third hole.

The famed designer and winner of the first U.S. Open, Charles Blair Macdonald, created Sleepy Hollow’s original course in 1911. Preeminent at the turn of the last century, Macdonald also created such courses as the National Golf Links, Piping Rock, The Creek, Yale and Bermuda’s Mid-Ocean Course. In the early 1930s, A.W. Tillinghast gave Sleepy Hollow a major facelift, expanding it to 27 holes. (Bobby Jones played an exhibition match to mark the opening of “Tillie’s” holes.)

While primarily a family-oriented club, Sleepy Hollow has also hosted major amateur and professional events. In the late 1980s and early ‘90s, the Senior Tour regularly held its Commemorative Tournaments at the club — with legendary golfers such as Sam Snead, Arnold Palmer, Gary Player and Lee Trevino taking part. Over the years, Sleepy Hollow has matured into one of the MGA’s finest tests of golfing skill, as you will see first-hand at this year’s event.



Sleepy Hollow’s “signature” hole is the majestically framed sixteenth — with its sweeping vistas of the Hudson River. This scene inspired the official logo of the 2002 Women’s Amateur Championship, right. Eight other holes also provide spectacular river views (from the 17th, the panorama extends from West Point to Manhattan!) and the remainder take golfers through exhilarating countryside and woodlands.

