

Sloping, velvety lawns, magnificent trees, extensive gardens, and a house of architectural beauty are the important features of the Sleepy Hollow Country Club. Ultimately the membership will be one thousand, six hundred now being enrolled, including a dozen lady members

THE MOST ELABORATE COUNTRY CLUB IN AMERICA

By PHIL M. RILEY

Photographs by LOUIS H. DREYER

AMONG the several features for which New York State may justly claim distinction may be mentioned the Sleepy Hollow Country Club, organized early this spring by wealthy New York men. Its home is "Woodlea," the magnificent estate formerly owned by Mrs. Elliot F. Shepard, situated thirty miles north of New York at Scarborough-on-the-Hudson.

Club and home features are here combined more intimately than has ever been done before. In fact, the atmosphere of the place approaches that of a house party, except that members pay for their entertainment. Only by making use of a residence could this result have been achieved, yet no club could possibly afford to make the outlay necessary to develop an estate and building such as "Woodlea," which is valued at over \$1,500,000.

The house itself ranks among the foremost efforts of McKim, Mead & White, the well-known architects. It is an imposing three-story structure of brick with stone trim in the style of the Italian Renaissance, and stands on rising ground where it commands a sweeping view up and down the Hudson nearby. Undoubtedly the two most striking architectural features are the magnificent porte-cochere which

is used as the main entrance, and a superb terrace adjoining the opposite side of the building and overlooking the gardens.

No specially-designed house could be better suited for use as a country club. Altogether there are seventy-four rooms with all necessary and most up-to-date appointments. Across the front of the house stretch the main salon, the library, and dining-room. All are inter-connecting and command a delightful view of the Hudson. Two hundred persons can be seated at small tables in the dining-room, and the kitchen and pantry arrangements are ample to serve that number.

On the second and third floors there are eighteen large double bedrooms with baths attached, and twenty-one smaller bedrooms especially suitable for bachelors stopping at the club-house for a night at a time.

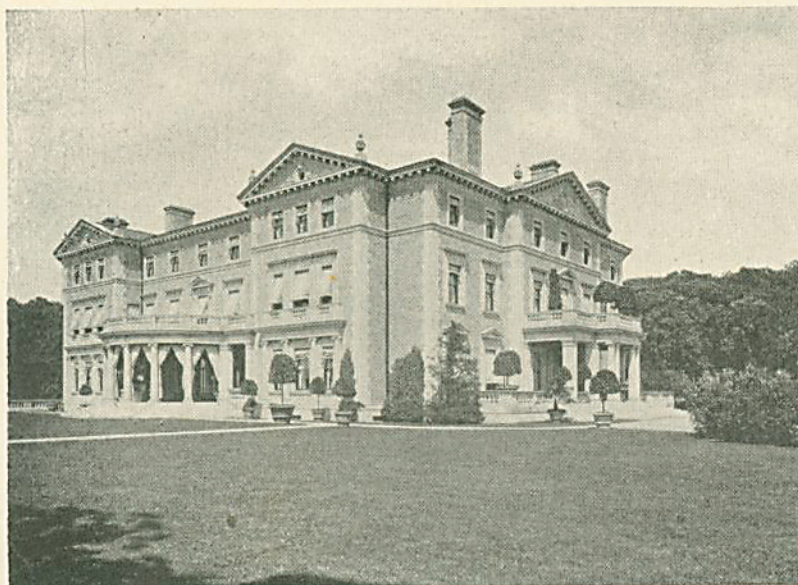
As a club, the Shepard house remains practically the same as when a home. The lease includes all the tasteful furniture, the beautiful tapestries, rugs, and many other art treasures.

This rare architectural gem stands in a wonderful green setting of thirty acres, made up of sloping velvety lawns; magnificent trees and attractive shrubs; an Italian garden of unusual

extent and beauty with its fountain basin, formal flower beds and vine-clad pergola; and a charming little lake tucked away among the rolling hills. To furnish the necessary element of outdoor recreation, several tennis courts have been prepared and an eighteen-hole golf course is about to be laid out, for which the country is well suited.

The whole aspect of the place is that of one of the great ancestral domains of England. At the entrance there are two picturesque lodges and gateways from which a broad avenue leads to the house, while excellent roads and shady foot-paths thread the grounds in several directions, the spacious stables being one of the objective points. Here are provided accommodations for two hundred automobiles. These buildings are fireproof and have been furnished with every modern convenience essential to a well-equipped garage.

With its palatial building, magnificent location and charming grounds, its outdoor recreations and the beauty of the motor trip from New York to it, "Woodlea" may rightly claim the honor of constituting the most remarkable and elaborate country club estate in America, if not in the world.



The house itself is an imposing three-story structure of brick with stone trim in the style of the Italian Renaissance



A superb terrace on one side of the house overlooks the Italian garden with its fountain basin, formal flower beds, and pergola